












L'Électricité Courant

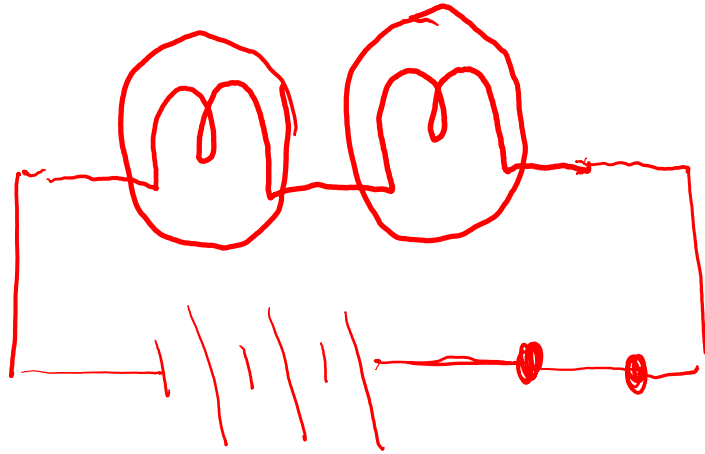


Symboles électriques:

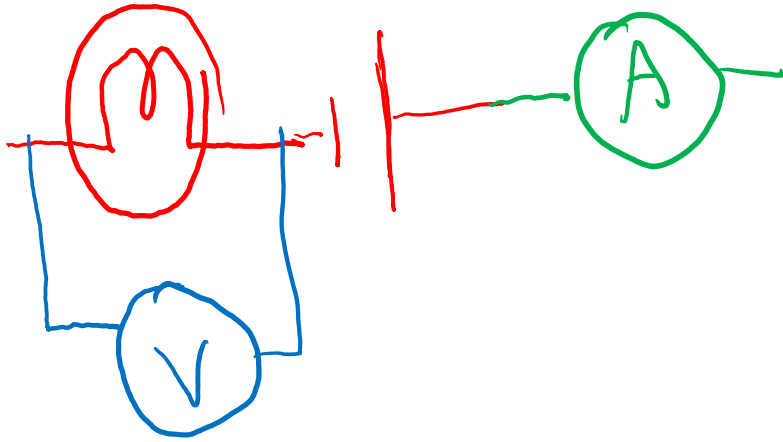
- Fil conducteur 
- Ampoule 
- Pile  ou 
- Batterie (2 ou plus piles ensemble)  
- Interrupteur ouvert 
- Interrupteur fermée 
- Ampèremètre 
- Voltmètre 
- Résistance 

Dessinez vos circuits avec un
règle!!! Sérieusement.

Ex.



C'est un
circuit avec
2 ampoules,
un batterie de
3 piles et un
interrupteur
fermé connectés par des
fils.



Si je veux mesurer
la tension, le
voltmètre doit
être en parallèle

Si je veux mesurer le
courant, l'ampère mètre est
en série.